



Hotel Accommodation

Some of the hotels or pubs in this area hold a lot of local history, not just with the building itself but with the publicans and patrons who are considered the “locals”. If you ever want to know where the best place is to go fishing or the best bush walks etc., this is the place to start.

Below are listings of hotels offering accommodation; the prices do vary in that some charge per room, some per person and some include meals.

Listings are alphabetical but below they are named by area.

Listings

Bonalbo

Dog ‘n’ Bull Hotel (2)

Casino

Commercial Hotel (4)

Tattersalls Hotel (7)

Drake

Lunatic Hotel (10)

Mallanganee

Mallanganee Hotel (12)

Urbenville

Crown Hotel (14)

Dog 'n' Bull Hotel

Bonalbo

The Dog 'n' Bull is the Bonalbo Local. It is a relatively new hotel as the original Hotel was established in 1909 and burnt down in 07/1985 and then rebuilt and reopened 19/08/2005.

It has various types of accommodation but the new bunkhouse is most suited for backpackers. This is a purpose built building consisting of 4 rooms with a communal kitchen and shared bathroom. Each room holding 2 people, configuration is bunks with a double on the bottom and single on top.

Amenities:

- Linen provided
- Outside BBQ area with undercover seating
- Common areas serviced weekly
- WI-FI – password given on check in
- Bistro and pool table in hotel if wanted

\$140.00 per person per week – 1 week in advance

45kms to River Run Farm via Tabulam Road (45 mins)

29kms to river Run Farm via Hootons road (39 mins) unsealed

22.4kms to Tabulam Packhouse (20mins)

Phone (02) 6665 1477 to make a booking or enquiry



Dog 'n' Bull Hotel



Bedroom in Bunkhouse



Bathroom



Communal Kitchen

Commercial Hotel

Walker Street, Casino

The Commercial Hotel is located in the heart of Casino, the rooms are all located upstairs and there is a great balcony to be able to sit and relax after a long day's work or if you prefer there is an outdoor garden area.

The rooms come in various configurations but generally sleep up to three people, please discuss your needs when booking.

Amenities:

- Communal kitchen and lounge
- 3 large fridge freezers
- Rooms serviced weekly
- Coin operated laundry
- WI-FI free through local government plan in Casino - limited
- Large drying area
- Off street parking
- Saturday night entertainment
- Bistro, Juke Box, Pool tables all downstairs if wanted

\$250.00 per room per week – 1 week in advance

68kms to River Run Farm (1 hour 2 mins)

60kms to Tabulam Packhouse (47 mins)

Bookings to be made by phone (02) 6662 1007

or email commercialhotel@inet.net.au



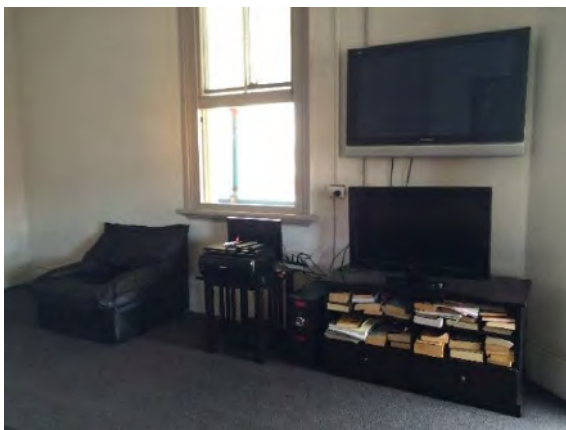
Commercial Hotel Walker Street



Double and single room



Twin room



Communal lounge



Communal kitchen



Balcony overlooking the town

Drying area



Separate toilet and shower rooms



Tattersalls Hotel

Barker Street, Casino

The Tattersalls Hotel was established in 1859 and consequently is Casino's oldest existing business, it has moved with the times by adding a few modern touches to it, a beautiful beer garden and Thai restaurant

The budget Pub-styled standard rooms are located on the first floor above the Tatts Hotel. These rooms offer flexible bedding configurations including a double room, (2 singles or a double bed) a double and a single bed, or 3 singles beds. All rooms have shared bathrooms, TV, Air-conditioning, fridge and tea and coffee facilities, and some have microwaves and hand basins

Amenities:

- Rooms are serviced weekly
- Communal lounge area
- Shared kitchen
- Extra fridges in communal area
- Unlimited WI-FI
- In house TV in rooms

Rates

Weekly single \$200 – paid in advance

Weekly double \$250 – paid in advance

Weekly triple \$265 – paid in advance

68kms to River Run Farm 1 hour 2 mins

60kms to Tabulam Packhouse 47 mins

Phone (02) 6662 1611 or email tattscasino@gmail.com



Tatts Hotel



Pool Table



Double and single



Room showing hand basin, storage and desk



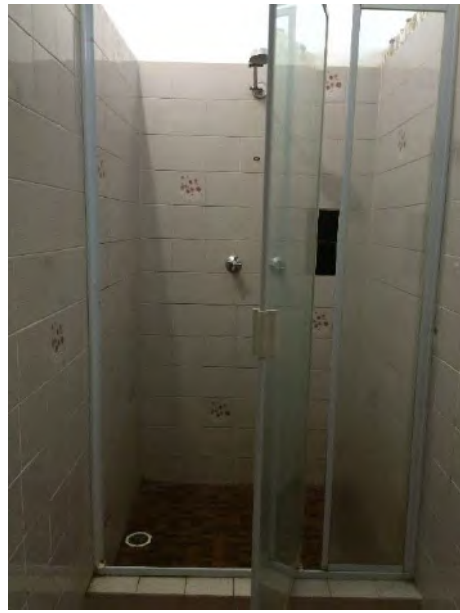
Double room – fridge microwave



Shared lounge area



Bathroom with bath and toilet



Single shower room

Lunatic Hotel

Bruxner Highway, Drake Village

The Lunatic Hotel, would be considered one of the closest hotels to River Run Farm, it is located on the Casino to Tenterfield bus route which runs Monday, Wednesday and Friday. It holds regular Pool competitions on a Wednesday and Dart Competitions on a Friday, and welcome new comers to join them. They also have a karaoke night on the 2nd Saturday of the month and either a band or singer on the last Saturday of the month.

The Lunatic Hotel have a purpose built block to accommodate pickers, comprising of 4 dorm rooms. 2 rooms with 4 beds and 2 rooms with 6 beds. In between these rooms you have a large undercover area in which to relax if you don't want to go over to the pub. There are 3 unisex showers and toilets and a shared kitchen.

Amenities:

- Extra fridge in common area
- Coin operated laundry
- Off street parking
- Industrial rubbish bin on site for waste
- WI-FI password given at check in
- Pub meals available
- NO charging ports in rooms but available in hotel

\$120.00 per person per week – 1 week in advance

34kms to River Run Farm 30 mins

28kms to Tabulam Packhouse 21 mins

**For bookings phone Amanda on (02) 6737 6757 or 0432248440 or email
amandahartley17@gmail.com**



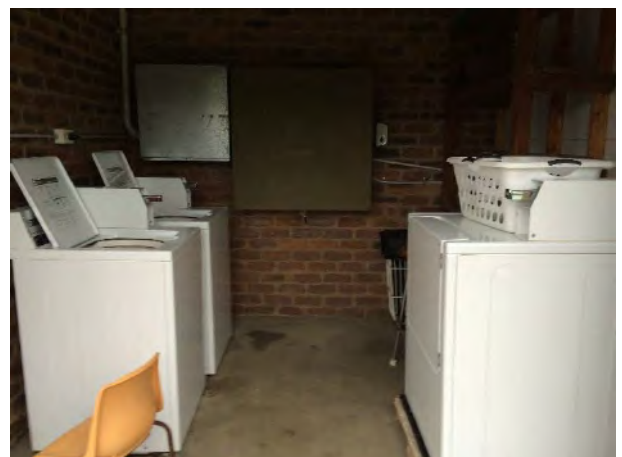
4 bed dorm



Shared kitchen



Hand basins in bathroom



Coin operated laundry

Mallanganee Hotel

Sandilands Street, Mallanganee

Settled at the foot of the Mallanganee Range, this quiet village is full of hidden treasures. The Koori place name of Mallanganee means “Pine tree hill”. The display of cattle brands in the Mallanganee Hotel is a clue to the farming history of the area, with this scenic area being the heart of “Beef Country”. Mallanganee is one of the Kyogle Shire’s “Gateway’s to the Rainforest”.

Views from the Mallanganee Lookout are spectacular, with Mt Warning visible on the eastern horizon. There are rainforests and flora reserves close by, with the Mallanganee National Park itself being a very rare example of a dry land rainforest.

With all this close by, the Mallanganee Hotel is the ideal choice. It has accommodation comprising 4 motel-style rooms, 2 double rooms with ensuite, 1 room with a double and single and 1 with 2 singles.

Amenities:

- Small bar fridge and jug in each room
- Fan, heater and TV’s in all rooms
- BBQ in common area for cooking
- Common area has tables and seating for games or preparing lunches etc
- Rooms serviced weekly
- Basketball hoop, pool table and dart board available
- EFT-POS at bar and maximum cash out \$300 no charge
- WI-FI – password given at the bar
- Restaurant

\$240.00 per person per week – 1 week in advance

34kms to River Run Farm 33 mins

22kms to Tabulam Packhouse 20 mins

Phone (02) 6664 5102 for booking enquiries



Mallanganee Hotel



4 x Rooms



Double room with ensuite



Equipment in rooms



Bathroom



Double and single room

Crown Hotel

Urban Street, Urbenville

The Crown is a classic Aussie pub. The local watering hole and meeting place. Base yourself here; and journey through Urbenville's breathtaking scenic beauty, plus the areas of cultural and historical significance.

The Crown offers comfortable and affordable accommodation in a classic Aussie pub style, 23 rooms available in total with varying configurations, some also have hand basins. Please make your needs known when booking, as to what you are seeking.

Amenities:

- Communal lounge area with TV
- Washing machines and dryer at no extra charge, outside clothes line
- Share kitchen, cereals, tea, coffee, milk provided – no cooking
- 2 fridges
- WI-FI manager has the password
- Outside area plus balcony overlooking the town
- Off street parking
- Weekly service on room – please advise when it suits
- Karaoke on request, happy hour 5-6pm, pool table

\$170.00 per person per week including evening meal (cooks decision) – 1 week in advance

50kms to River Run Farm (57 mins)

58kms to Tabulam Packhouse (51 mins)

Bookings to be made by phone on (02) 6634 1213



Crown Hotel



Bar



Shared kitchen



Communal lounge area

Double room



Double and 2 singles





Balcony



View from Balcony

Outside area



Laundry

